

Are You Road-Wise?

Toolbox Talk

Test Your Road IQ and Your 'Sharing the Road' Skills!

Can you read the road? You may be surprised at what you learn! Answer the following questions and then discuss the answers with your colleagues.

1) Yellow lines on the road separate traffic traveling in the same direction.

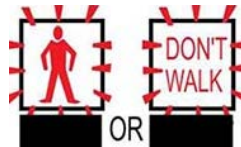


True / False

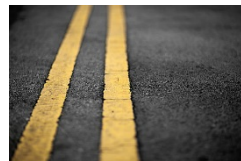
2) What does a yellow **EXIT ONLY** panel below a green freeway guide sign mean?



3) What does a *flashing* **DON'T WALK**, or don't walk symbol, tell you?



4) Are you permitted to cross a double solid yellow line?



5) What does a pentagon-shaped sign mean?



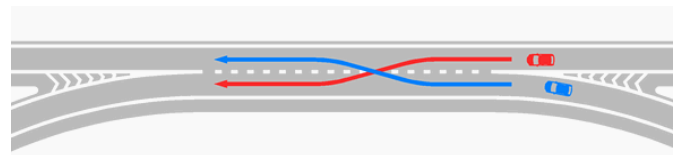
6) What do the familiar red, white, and blue shields tell drivers?



7) What is the purpose of the green and white "mile markers"?

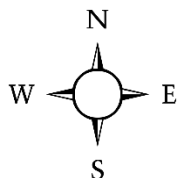


8) What are the orange diamond signs used for?



9) In a "weaving section" where traffic is entering and exiting a freeway interchange, who is required to yield the right-of-way?

10) What direction are you traveling if you're on an interstate numbered I-494?



Are You Road-Wise?

Toolbox Talk

Quiz Answers

1) False. Yellow lines on the highway, whether solid or dashed, generally separate traffic going in *different* directions.

2) A yellow **EXIT ONLY** panel below a green freeway sign means that the lane under the panel becomes the exit ramp. If you remain in that lane, you *must* exit the freeway.

3) A *flashing* **DON'T WALK**, or don't walk symbol, tells pedestrians already in the street that they should continue across; but tells pedestrians still on the curb *not* to start walking. Once the signal stops flashing, and shows a *steady* **DON'T WALK**, pedestrians should not leave the curb.

4) The only time that you are permitted to cross a double solid yellow line is when you are making a left turn into a driveway or business entrance.

5) The pentagon shape with the point to the top warns us to watch for school children. The new optional color for these signs – fluorescent yellow-green – is much easier to see in low light and foggy/rainy weather.

6) The familiar red, white, and blue shield tells drivers they are traveling on an Interstate Highway. Even-numbered roads with 2 digits travel East-West; odd-numbered roads with 2 digits travel North-South. Interstate routes with 3 digits are beltways, loops, or spur routes.

7) The green and white “mile markers” help us gauge how far we've driven, or how far we need to drive, through a state. They can also be used in case of an emergency.

8) The orange, diamond-shaped signs are used in construction zones, specifically to warn drivers about construction and work zone activity. Don't forget to slow down and give road crews a brake. Remember that in a work zone, a flagger has the same authority as a regulatory sign, so you can be cited for disobeying their directions.

9) The vehicle *entering* the freeway must yield the right-of-way to through-traffic and exiting traffic. The “weaving section” is one of the most hazardous lane-management situations.

10) If you're on an interstate highway with the number I-494, you may be traveling in a circle. 3 digit interstates beginning with an even number are often loops, or connect to other highways (if this is the case, it usually connects to another interstate only at one end.)

What's Your Score?

10 Correct	True Road Warrior!
8 – 9 Correct	Roadway Survivor!
6 – 7 Correct	Roadway Explorer!
4 – 5 Correct	Roadway Scout!
1 – 3 Correct	Surrender Your Keys!

